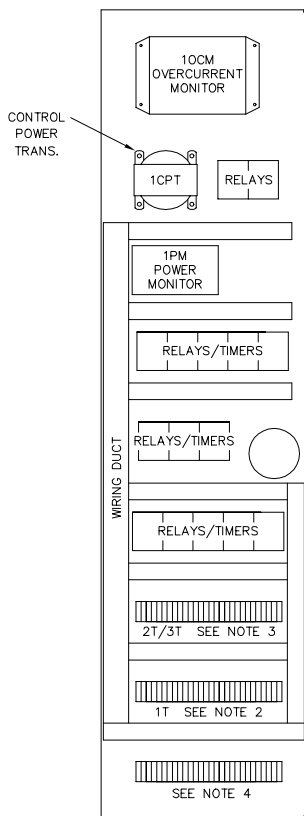
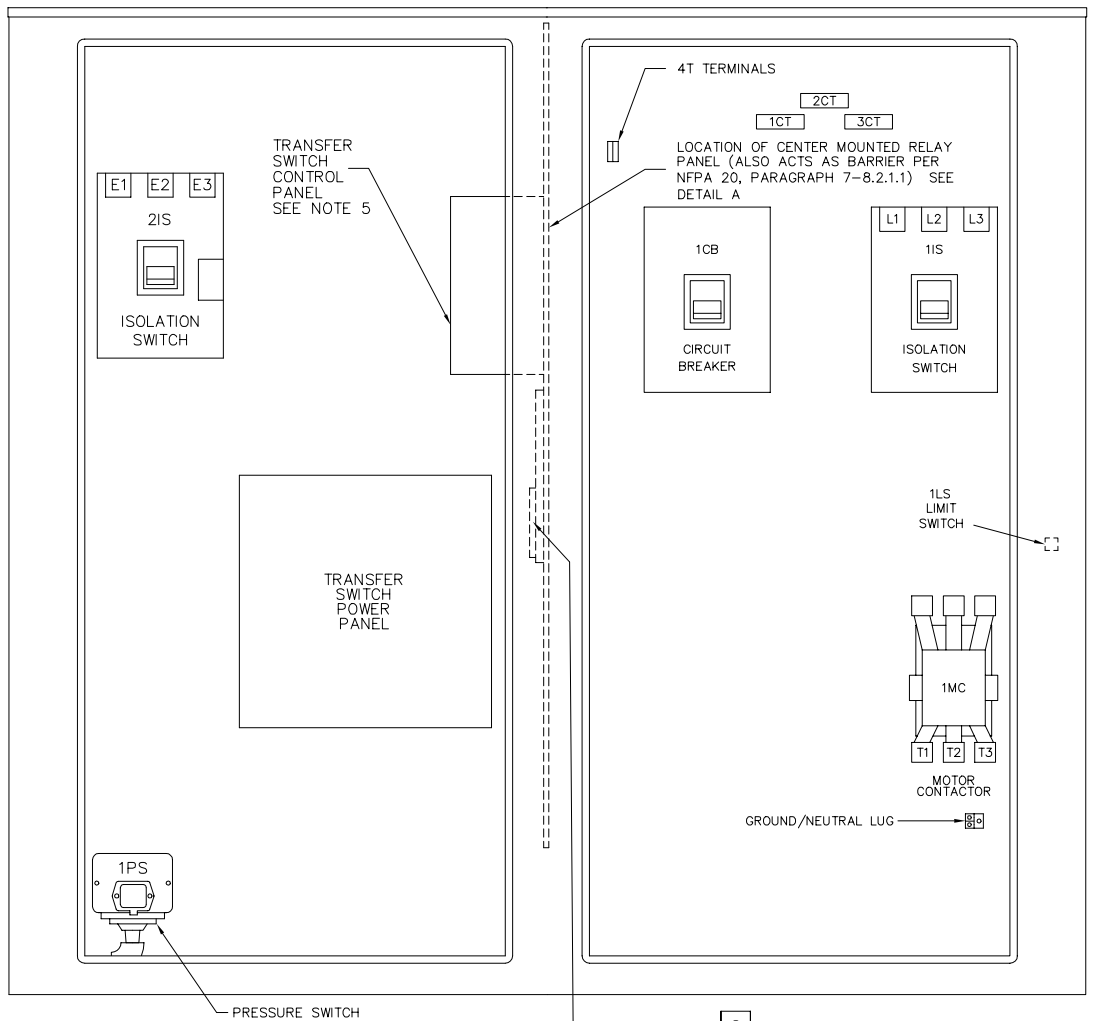


1T\*  
FIELD  
TERMINALS

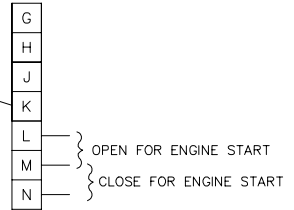
- 1 1
- 2 2 } N.O. CONTACT. OPENS ON LOSS OF CONTROLLER POWER
- 3 3
- 4 4 } N.C. CONTACT. CLOSES ON LOSS OF CONTROLLER POWER
- 5 5
- 6 6 } N.O. CONTACT. CLOSES WHEN PUMP RUNNING
- 7 7
- 8 8 } N.C. CONTACT. OPENS WHEN PUMP RUNNING
- 9 9
- 10 10 } REMOTE START. PUMP WILL START WHEN SWITCH CLOSES
- 11
- 12
- 13
- 14
- 15
- 16
- 17
- 18 18 } N.O. CONTACT. CLOSES ON PHASE REVERSAL
- 19 19 } N.C. CONTACT. OPENS ON PHASE REVERSAL
- 20 20
- 21 21 } N.O. CONTACT. OPENS ON MOTOR OVERLOAD
- 22 22 } N.C. CONTACT. CLOSES ON MOTOR OVERLOAD
- 23 23



DETAIL A  
CENTER MOUNTED  
RELAY PANEL

NOTES:

1. POWER MONITOR SIGNALS ANY OF THE FOLLOWING FAILURES:  
LOW VOLTAGE  
LOSS OF VOLTAGE  
PHASE REVERSAL
- \* 2. 1T FIELD TERMINALS ARE LOCATED AT BOTTOM OF SIDE MOUNTED RELAY PANEL. SEE DETAIL A
3. 2T, 3T & MANUAL STOP JUMPER ARE LOCATED IN THIS AREA.
4. EXTRA (OPTIONAL) TERMINALS ARE LOCATED IN THIS AREA.
5. SEE ASCO OPERATION MANUAL FOR LOCATION OF DIP SWITCHES.



MAXIMUM MOTOR HORSEPOWER	VOLTS AC					PRIMARY WIRE SIZE	
	200V	208V	220V - 240V	380V - 415V	440V - 480V	LINE TERMINAL WIRE SIZE PER PHASE	SERVICE ENTRANCE GROUND LUG WIRE SIZE
25 HP	25 HP	30 HP	50 HP	60 HP	#14-1/0 AWG	(2) #10-1/0 AWG	
40 HP	40 HP	50 HP	75 HP	100 HP	#4-4/0 AWG	(2) #10-1/0 AWG	
60 HP	75 HP	75 HP	125 HP	150 HP	#4-350 MCM	(2) #10-1/0 AWG	
100 HP	125 HP	125 HP	200 HP	250 HP	(2) #3/0-250 MCM	(2) #10-1/0 AWG	
150 HP	150 HP	200 HP	300 HP	400 HP	(2) #3/0-350 MCM	(2) #6-250 MCM	

	DRAWN <i>SR</i>	5-22-98	<b>METRON, INC.</b> DENVER, CO.
	CHECK <i>KH</i>	5-22-98	
	APPD <i>X.D.</i>	5-22-98	
INTERNAL LAYOUT & EXTERNAL HOOKUP MODEL M300, UTILITY/GEN-SET ELECTRIC FIRE PUMP CONTROLLER WITH ASCO TRANSFER SWITCH			CH33014C
			SCALE N.T.S. SHEET 1 OF 1